

FROM SURPLUS HEAT TO PROCESS HEAT AT TAULOV DAIRY



3. December 2025





Lise Christiansen

lica@arlafoods.com

Business Development Manager/
Energy Responsible Taulov Dairy

20 years of experience with energy
optimization and energy management



TAULOV DAIRY - A PART OF ARLA FOODS

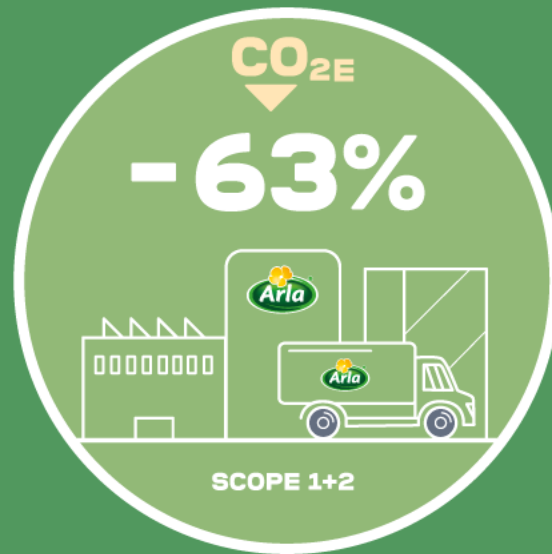
- 250 employees
- Milk - 620.000 tons/year
- Production – 62.000 tons cheese/year
- Cheese types: Danbo, Gouda, Edam etc.
- Energy consumption yearly
 - Heat: 40 GWh
 - Electricity: 30 GWh



ARLA'S CLIMATE AMBITION

2030

(FROM A 2015 BASELINE)



**PRODUCTION &
OWNED LOGISTICS
ENERGY USAGE***



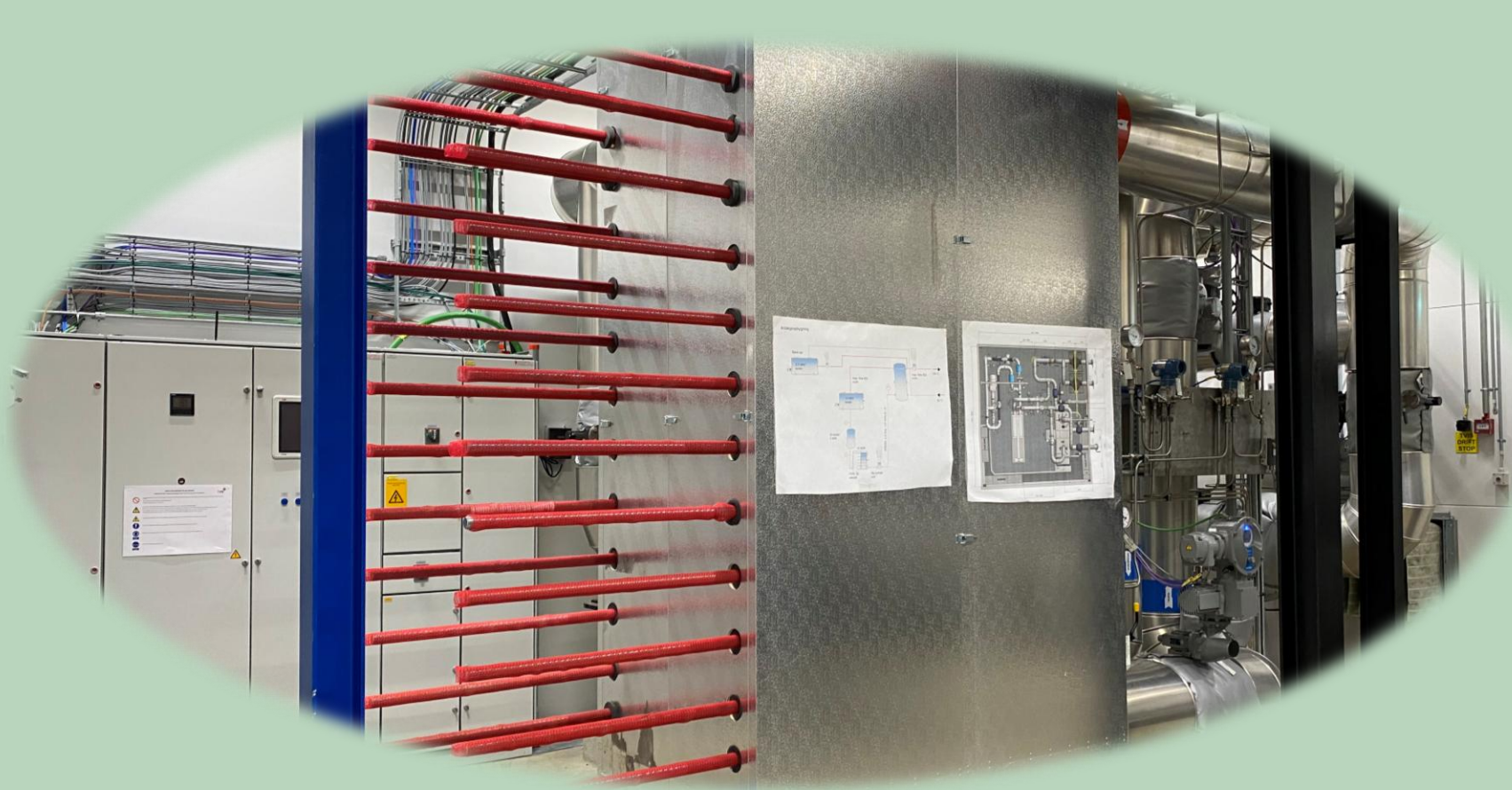
**FARMS, SOURCED WHEY,
3RD-PARTY LOGISTICS
& PACKAGING****

*also including targets for offices

**also including targets for food waste. Targets for packaging are based on recyclability and reduction of virgin fossil-based plastic

2050



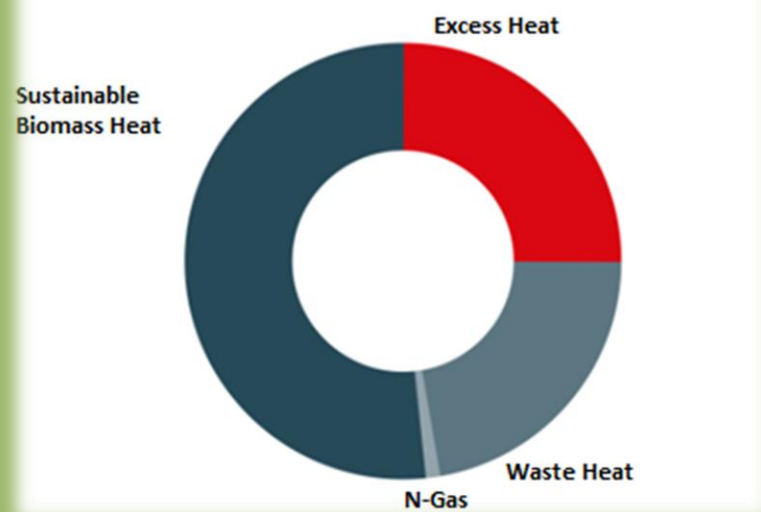


DISTRICT HEATING AS PROCESS HEAT



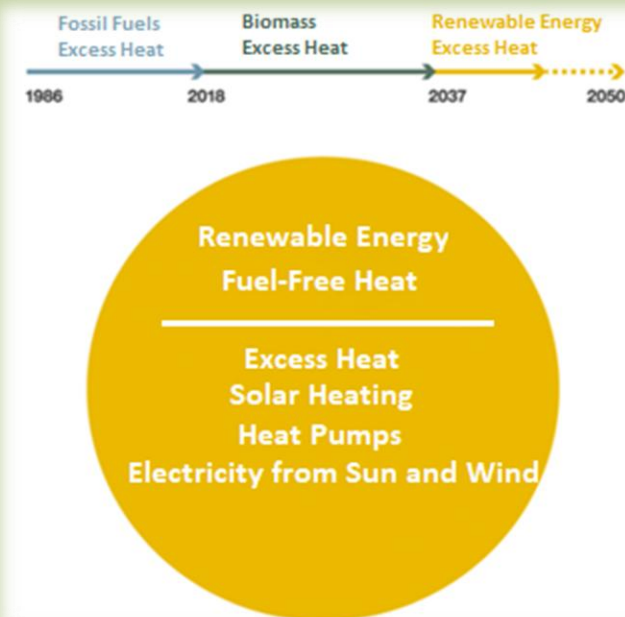


HEAT SUPPLIER



TVIS - CO₂ factor: 0.0046 tons CO₂ /MWH

ORIGIN OF THE DISTRICT HEAT



VISION

WHAT WOULD IT TAKE TO IMPLEMENT DISTRICT HEATING?

Facts

- Taulov hot water temperature is 105°C
- TVIS' temperature 78-114°C
- District heating available 8 months/year at min 105°C
- Natural gas boiler will be used as backup
- The project will reduce natural gas use by 55% and CO₂ emission with 3.6 mio. kg

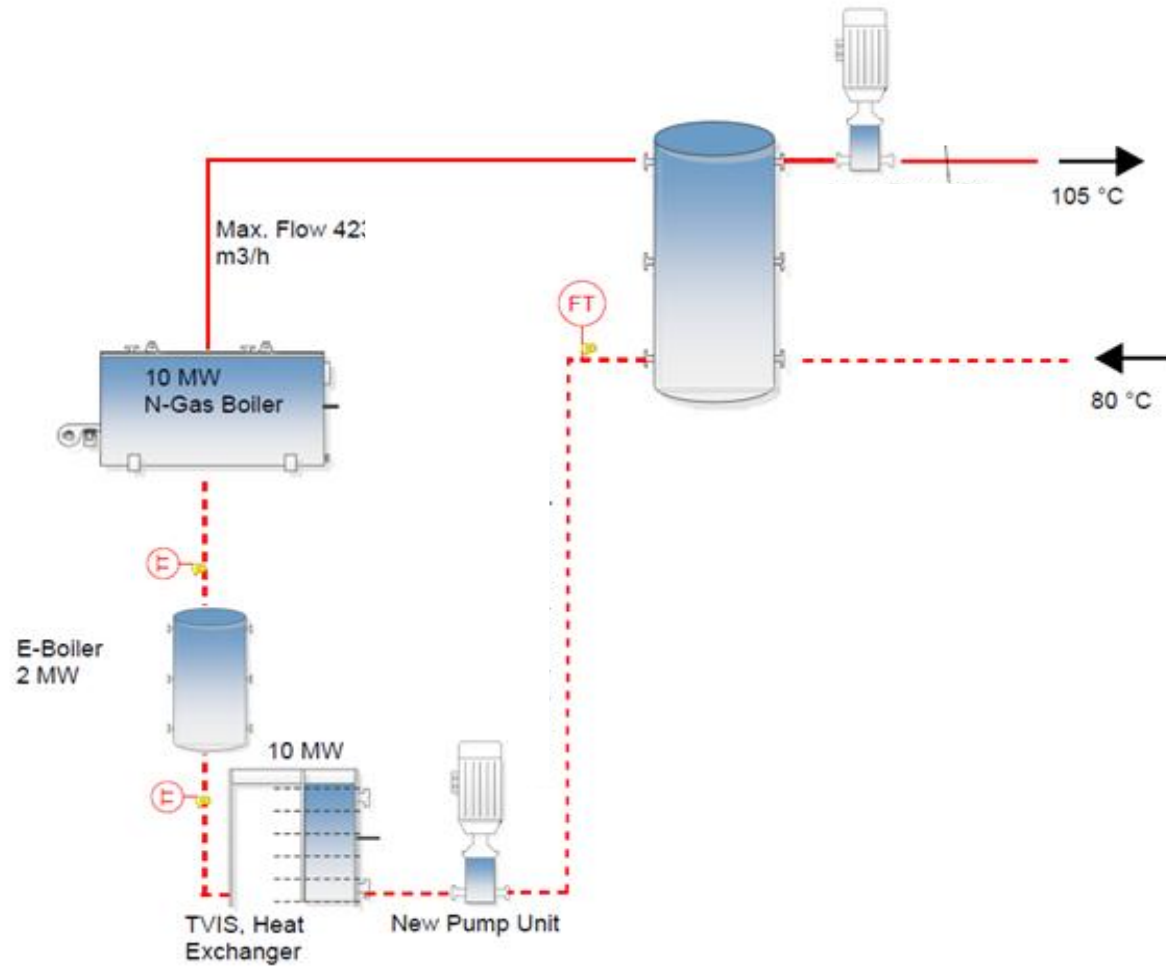
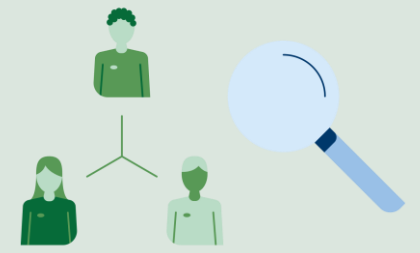


- District heating pipeline
- Heat exchangers
- Necessary components for control on the district heating side

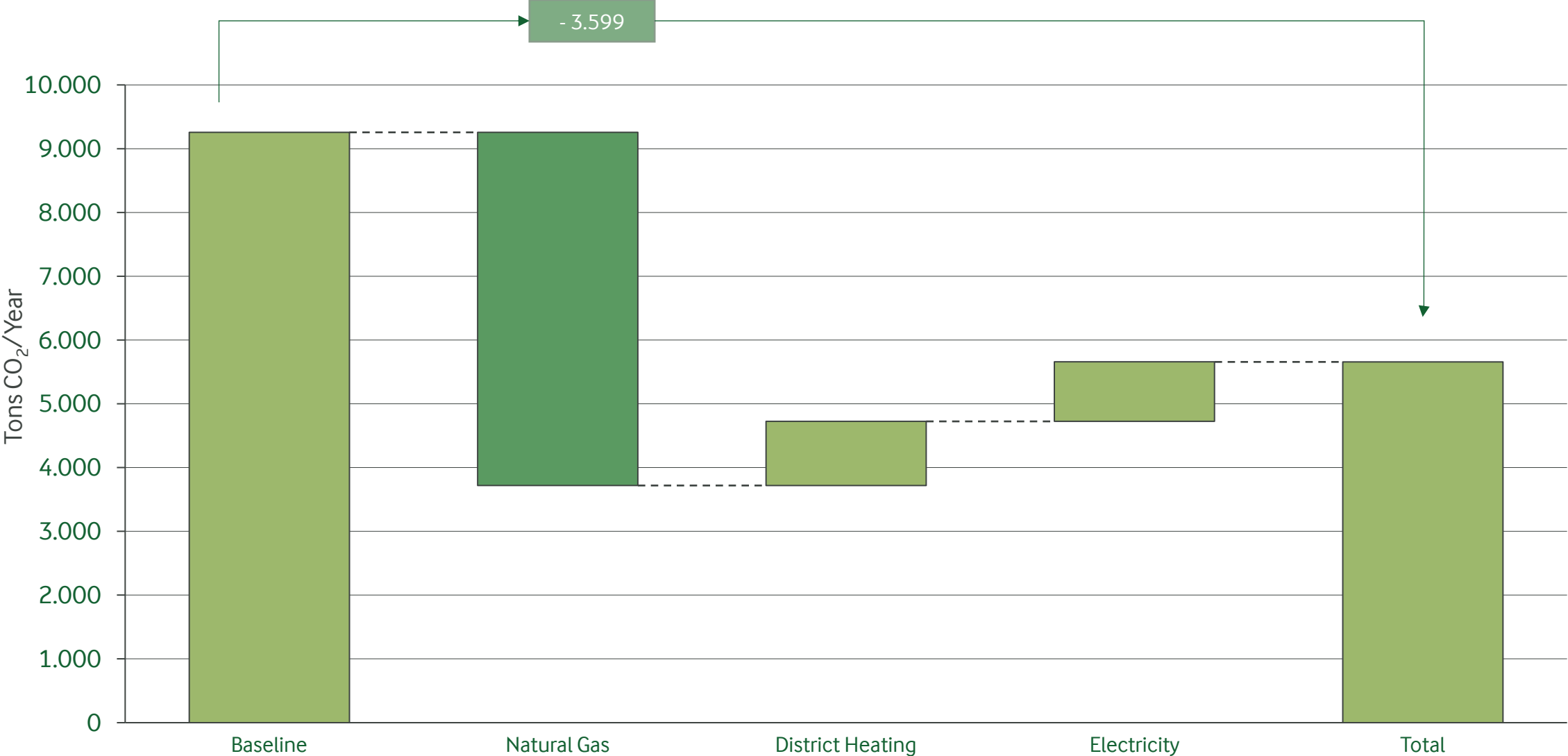
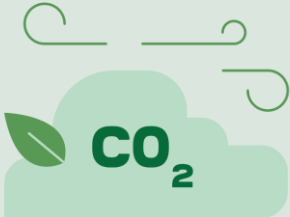


- Building for heat exchangers
- Piping between hot water system and heat Exchangers
- E-Boiler
- Buffer Tank

SOLUTION

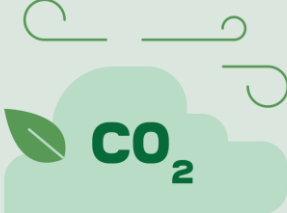


CO₂ SAVINGS



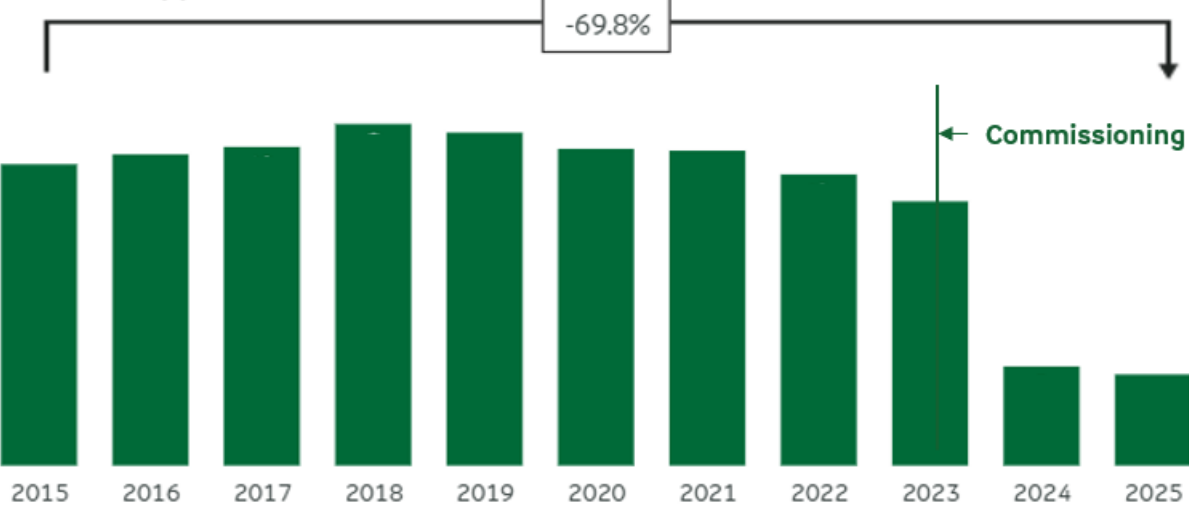


RESULT AND CELEBRATION



Historical emission by year

Scope 1 & 2

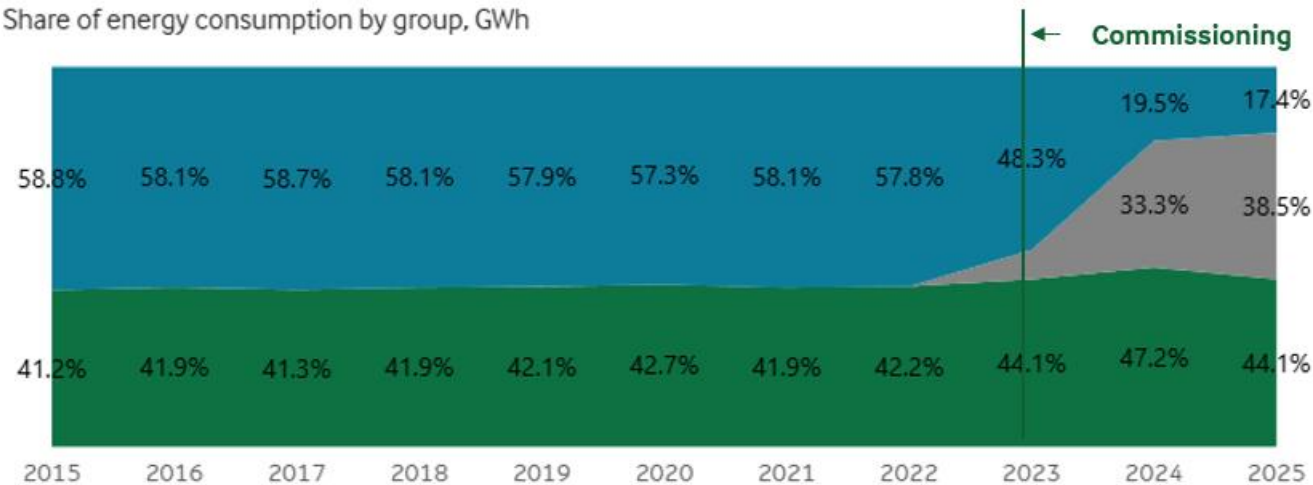


“The project is a great step forward for Taulov Dairy in their environmental journey and supporting Arla’s aim to reach Carbon Net Zero in all our operations globally, from our sites to our trucks, by 2050. Big compliments to the team to realize this project in time and within budget.”

Bart van Schaik, Vice President , - DK Domestic & BSM Production



Share of energy consumption by group, GWh



Group baseline view ● EL. & Dist. Heating, conventional ● EL. & Dist. Heating, renewable ● Fossil Fuel



THANK YOU

